

**The Susan Bateson and Stephen S. Fuller Collection
Monhegan Museum of Art & History**

While some works from the recent large gift of artworks from Susan Bateson and Stephen Fuller appear in the other collection documents, the majority have yet to be added to our collections database. They appear here, and are available to you as you make your selection for the 2028 Artists' Choice exhibit.



Abraham J. Bogdanove (1886–1946)

Mending Lobster Pots, ca. 1925

Oil on canvas, 25 x 30 in.

Signed center right: A. J. Bogdanove



Abraham J. Bogdanove (1886–1946)
Redfield Painting on Monhegan, ca. 1928
Oil on board, 12 x 16 in.
Signed lower right: A. J. Bogdanove



Abraham J. Bogdanove (1886–1946)

Boat on Fish Beach, ca. 1938

Oil on board, 12 x 16 in.

Signed lower right: A. J. Bogdanove



Alfred Thompson Bricher (1837–1908)

Whitehead, Monhegan, ca. 1895

Oil on panel, 6 x 9 in.

Signed lower left: ATBricher



William Chadwick (1879–1962)

Harbor at Monhegan, ca. 1929

Oil on board, 14 x 18 in.

Signed lower right: W. Chadwick



Winfield Scott Clime (1881–1958)

Fish Beach, Monhegan, ca. 1910

Watercolor on paper, 14 ½ x 20 ½ in.

Signed lower left: Winfield Scott Clime



Constance Cochrane (1888–1962)

A Storm Brewing, Norton's Ledge, ca. 1920

Oil on board, 11 ½ x 15 ½ in.

Signed lower right: Constance Cochrane



Jay Hall Connaway (1893–1970)

Seas at White Head, Monhegan, ca. 1940

Oil on board, 20 x 36 in.

Signed lower right: Connaway

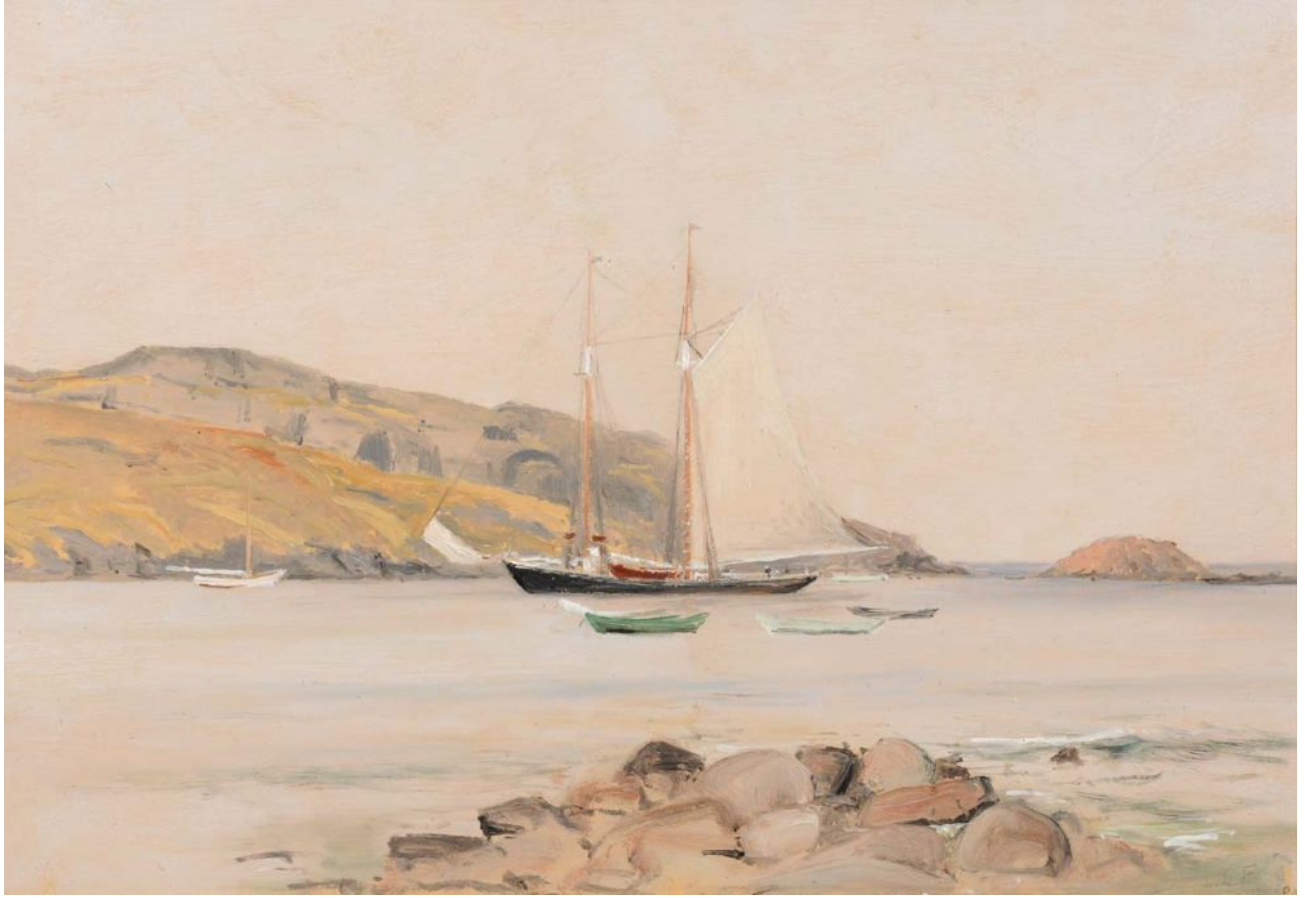


Ted Davis (1908–1995)

***Gull I*, 1950**

Watercolor on paper, 6 $\frac{5}{8}$ x 9 $\frac{7}{8}$ in.

Signed lower right: L T Davis



Lockwood de Forest (1850–1932)

Monhegan, Maine, 1905

Oil on board, 9 $\frac{3}{4}$ x 14 in.

Signed lower right: LdF



Joseph De Martini (1896–1984)

Pine, Rocks and Spray, 1946

Oil on canvas, 24 x 30 in.

Signed lower right: Joseph De Martini



Joseph De Martini (1896–1984)
Moonlight Over Monhegan Rocks, ca. 1950
Oil on paper, 9 ¼ x 10 ⅝ in.
Signed lower right: Joseph De Martini



Paul Dougherty (1877–1947)
Lowery Day, Monhegan, Maine, ca. 1908
Oil on canvas board, 12 x 16 in.
Unsigned



Helen Savier DuMond (1872–1968)

***Monhegan Headlands*, ca. 1925**

Oil on board, 12 x 16 in.

Unsigned



Charles Henry Ebert (1873–1959)

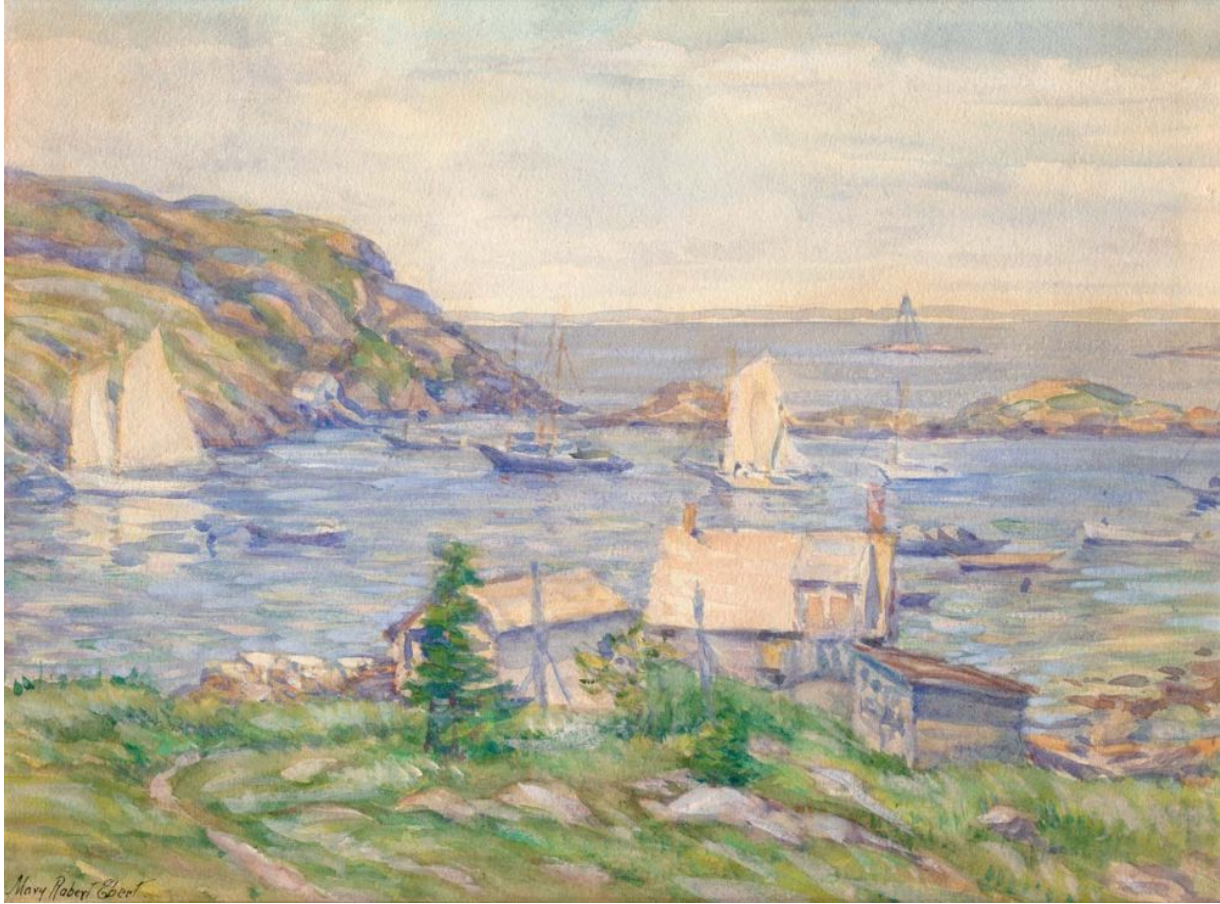
Monhegan, ca. 1920

Oil on canvas board, 14 x 18 in.

Unsigned



Charles Henry Ebert (1873–1959)
Rain Squall, Monhegan Harbor, n.d.
Oil on board, 12 x 16 in.
Signed lower left: Ebert



Mary Roberts Ebert

Mary Roberts Ebert (1873–1956)

Monhegan Harbor, ca. 1918

Watercolor on paper, 9 x 12 in.

Signed lower left: Mary Roberts Ebert



James Fitzgerald (1899–1971)

***Lone Doryman*, 1937–38**

Watercolor over graphite pencil on Whatman paper, 18 ½ x 24 in.

Signed lower right: James Fitzgerald



James Fitzgerald (1899–1971)

Recto: *On The Mooring, Monhegan Island*, ca. 1938

Watercolor and Chinese ink over graphite on paper

Verso: *Island Women II*, ca. 1943

Transparent and opaque watercolor with Chinese ink on paper

19 ¼ x 23 ¾ in.

Signed lower left (on *Island Women II*): James Fitzgerald



James Fitzgerald (1899–1971)

***Island Funeral* (also called *Burial, Monhegan*), 1956**

Watercolor and Chinese ink over graphite on paper, 19 ¼ x 23 ½ in.

Signed lower right: James Fitzgerald



James Fitzgerald (1899–1971)

Dance of the Fishing Boats, ca. 1960

Oil on canvas, 20 x 25 in.

Signed lower right: James Fitzgerald



James Fitzgerald (1899–1971)

Saltin' Mackerel, ca. 1960

Oil on canvas, 30 x 45 in.

Signed lower right: James Fitzgerald



Alfred Fuller (1899–1980)

Recto: *Northern Lights*, 1937

Verso: *Monhegan School House*, 1937

Oil on board, 14 x 20 in.

Signed lower right (on *Northern Lights*): Alfred Fuller



Sears Gallagher (1869–1955)

Recto: *Bringing in the Catch*, ca. 1920

Verso: untitled painting of a cliff, ca. 1920

Watercolor on paper, 14 x 20 in.

Signed lower right (on *Bringing in the Catch*): Sears Gallagher



Sears Gallagher (1869–1955)

Early Morning, Monhegan Harbor, ca. 1920

Etching on paper, 7 $\frac{3}{4}$ x 10 $\frac{3}{4}$ in.

Signed lower left: Sears Gallagher



Sears Gallagher (1869–1955)

Monhegan Schooner Captain, n.d.

Etching on paper, 6 x 8 ¼ in.

Signed lower left: Sears Gallagher



Sears Gallagher (1869–1955)
***Silvery Morning, Lobster Cove*, n.d.**
Watercolor on paper, 9 ¼ x 13 ½ in.
Signed lower left: Sears Gallagher



Ken Gore (1911–1991)

***Sea Mist*, 1950s**

Oil on Masonite, 29 ½ x 35 ½ in.

Signed lower left: KEN GORE



Robert Henri (1865–1929)

***Surf and Rocks* (also called *Sea and Cliffs*), 1903**

Oil on panel, 8 x 10 in.

Unsigned



Robert Henri (1865–1929)

They Stop to Talk, ca. 1918

Pastel on paper, 12 x 19 in.

Signed lower right: Robert Henri



Aldro Thompson Hibbard (1886–1972)

Monhegan Harbor, ca. 1950

Oil on board, 18 x 26 in.

Signed lower left: A. T. Hibbard

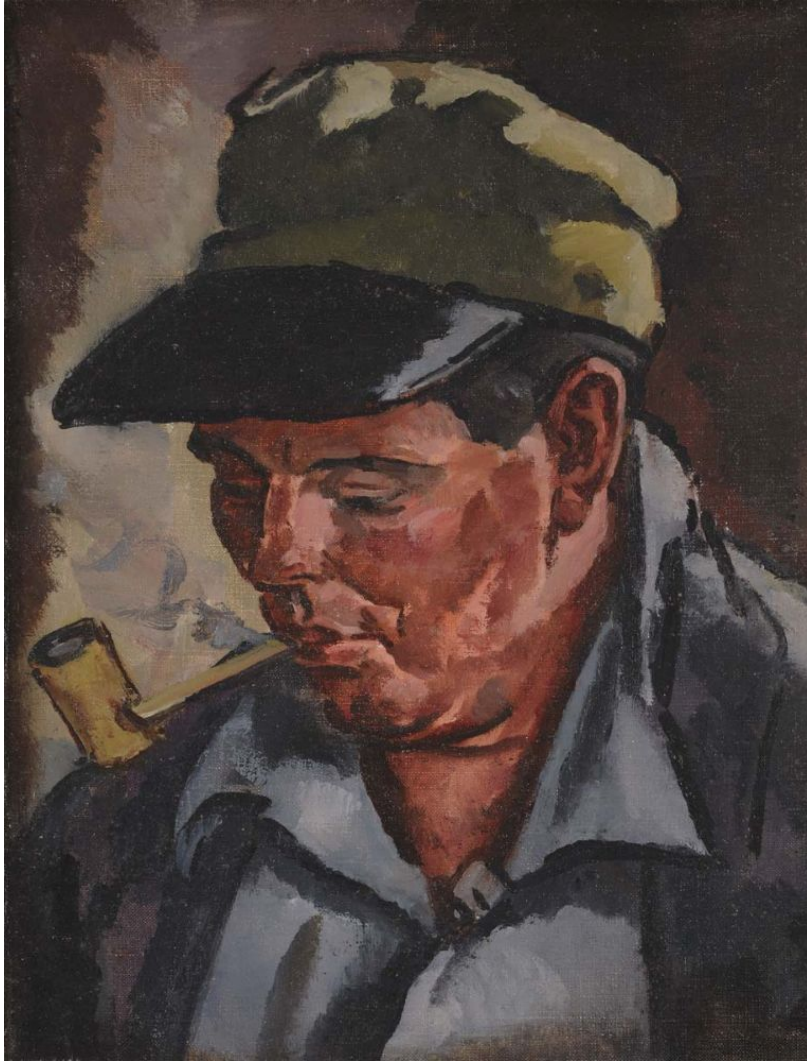


Emil Holzauer (1887–1986)

***Fishermen at Cribbage*, 1931**

Oil on canvas, 36 x 42 in.

Signed lower left: Holzauer 1931



Emil Holzhauer (1887–1986)
***Monhegan Fisherman*, ca. 1931**
Oil on board, 17 ½ x 13 ½ in.
Unsigned



Eric Hudson (1868–1932)

***Sundown*, ca. 1920**

Oil on canvas, 19 ³/₄ x 23 ¹/₄ in.

Signed lower right: Eric Hudson



Jacqueline Hudson (1910–2001)

***Moonlight*, 1929**

Watercolor and pastel on paper, 15 x 22 ¼ in.

Signed lower right: Jacqueline Hudson



Wilson Henry Irvine (1869–1936)

Boat Shed, 1909

Oil on canvas, 23 ¾ x 26 ½ in.

Signed lower right: Irvine 09



Rockwell Kent (1882–1971)
Monhegan Island, Maine, ca. 1905

Oil on panel, 4 $\frac{7}{8}$ x 6 $\frac{1}{4}$ in.

Unsigned

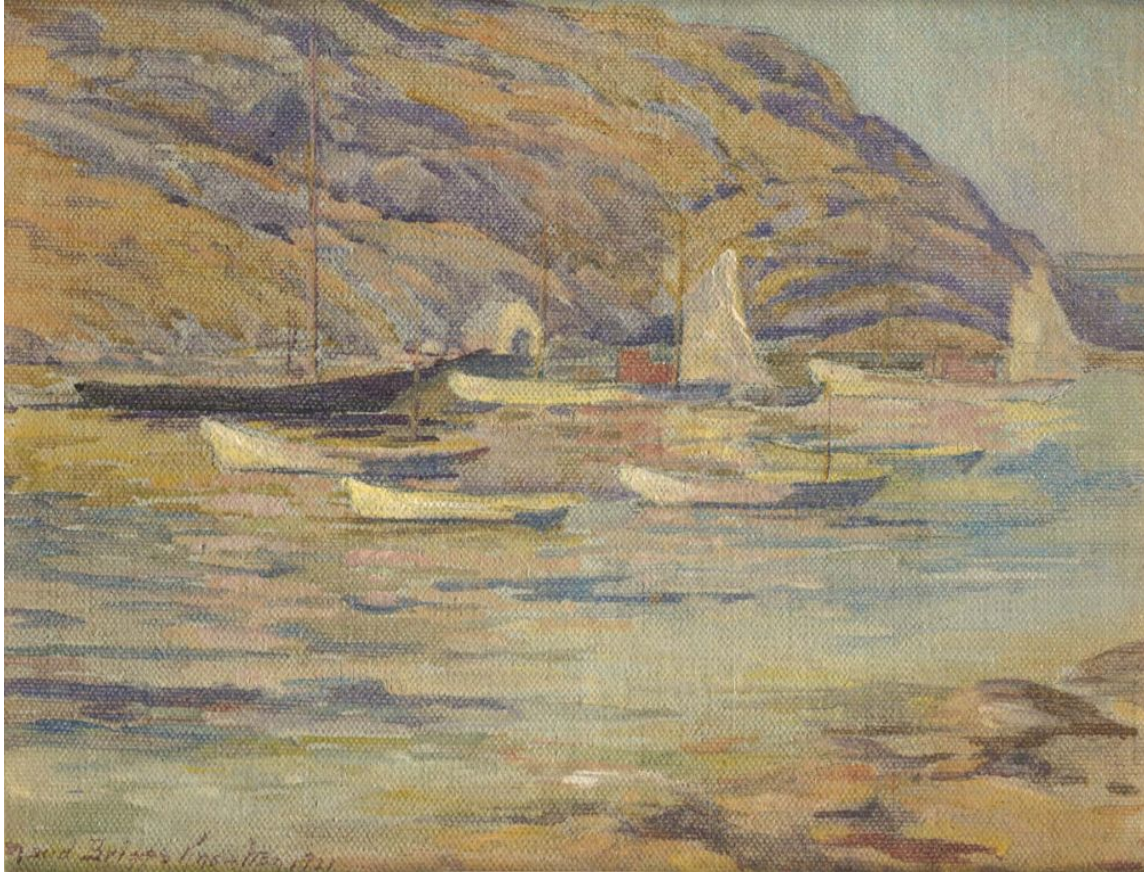


Maud Briggs Knowlton (1870–1956)

Monhegan Garden, 1912

Watercolor on paper, 14 ½ x 20 ½ in.

Signed lower right: Maud Briggs Knowlton Monhegan 1912

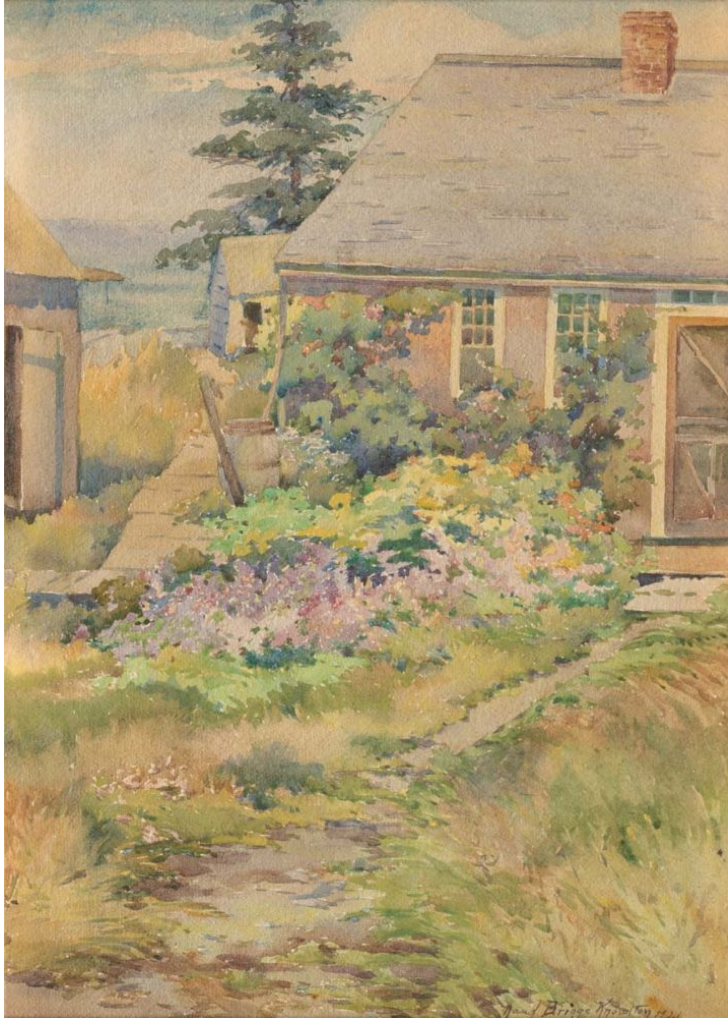


Maud Briggs Knowlton (1870–1956)

Boats in Monhegan Harbor, 1921

Oil on canvas board, 6 ½ x 8 ½ in.

Signed lower left: Maud Briggs Knowlton Monhegan 1921



Maud Briggs Knowlton (1870–1956)

Village House, Monhegan, 1921

Watercolor on paper, 15 $\frac{5}{8}$ x 11 $\frac{1}{4}$ in.

Signed lower right: Maud Briggs Knowlton Monhegan 1921



Josephine Levy (1904–1996)

Cormorant, 1967

Cast bronze, 13 x 7 x 4 in.

Signed under base: Bronze, a unique cast (cast in N.Y. by Liedras); made in 1967, Monhegan Island Josephine Levy Hantman

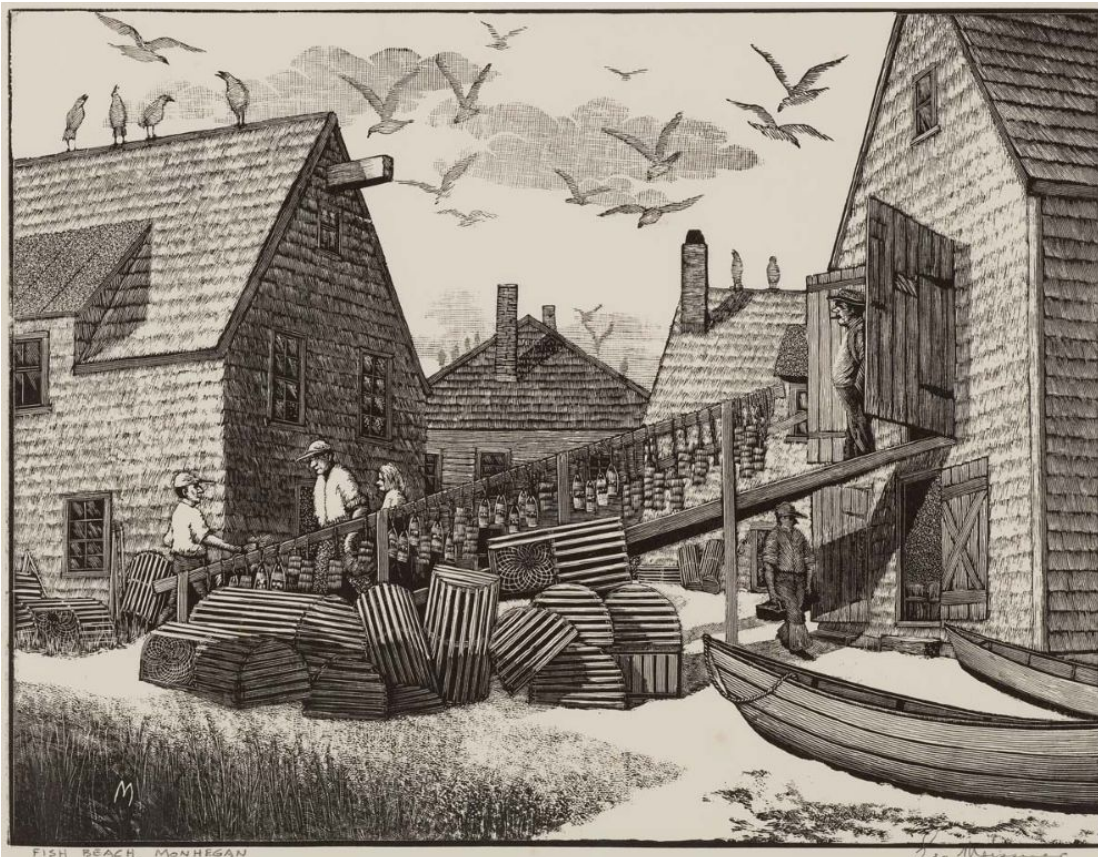


Mary King Longfellow (1852–1945)

Monhegan Island, 1890

Watercolor on paper, 11 ½ x 19 ½ in.

Signed lower right: M. K. Longfellow



Leo Meissner (1895–1977)

Fish Beach, Monhegan, 1932

Wood engraving on paper, 12 x 9 $\frac{3}{4}$ in.

Signed lower right: Leo Meissner



Zero Mostel (1915–1977)

***The Kiss*, ca. 1970**

Mixed media, painting, and collage on Masonite, 18 x 15 ½ in.

Signed lower right: Mostel



William Norton (1843–1916)

***Monhegan Fish Shacks*, 1912**

Watercolor on paper, 13 x 20 in.

Signed lower left: W. E. Norton



Edward Potthast (1857–1927)

***The Bathing Hour*, 1926**

Oil on canvas, 16 x 20 in.

Signed lower right: E. Potthast



Edward Potthast (1857–1927)

***Lavender Shack*, 1926**

Oil on board, 12 x 16 in.

Signed lower left: E. Potthast



Edward Willis Redfield (1869–1965)

***The Path to the Beach*, ca. 1928**

Oil on canvas, 26 ¼ x 32 ¼ in.

Signed lower right: E. W. Redfield



William Trost Richards (1833–1905)

***Courting at Sunset* (also called *Harbor at Monhegan, or View of Monhegan*), 1895**

Oil on panel, 5 x 9 ½ in.

Signed lower left: WTR



William S. Robinson (1861–1945)

Monhegan, 1909

Oil on board, 7 $\frac{3}{8}$ x 9 $\frac{3}{8}$ in.

Signed lower left: WM. S. Robinson 09



Meyers Rohowsky (1900–1974)

Lobster Cove, Monhegan Isle, 1946

Oil on canvas, 12 x 16 in.

Signed lower left: Rohowsky 46

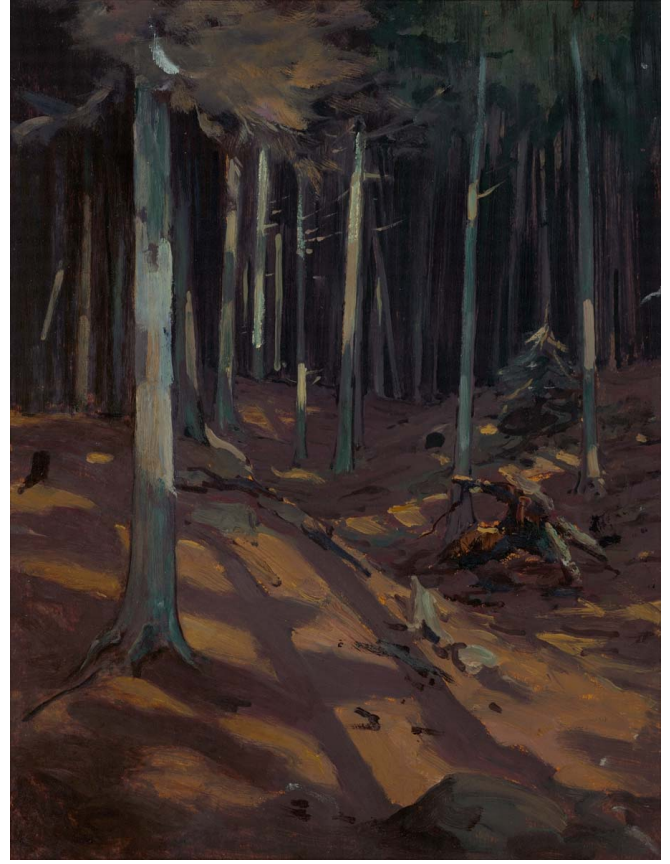


Karl Schmidt (1890–1962)

Harbor, ca. 1915

Oil on canvas, 24 x 48 in.

Signed lower left: Karl Schmidt



Amanda Brewster Sewell (1859–1926)

Recto: *The Crow's Nest*, 1905

Verso: untitled painting of Cathedral Woods, 1905

Oil on board, 19 ½ x 14 ½ in.

Signed lower left (on *The Crow's Nest*): A. B. Sewell



Robert van Vorst Sewell (1860–1924)

Fish Market, ca. 1913

Oil on canvas, 25 x 35 in.

Signed lower left: RvV Sewell



Robert van Vorst Sewell (1860–1924)

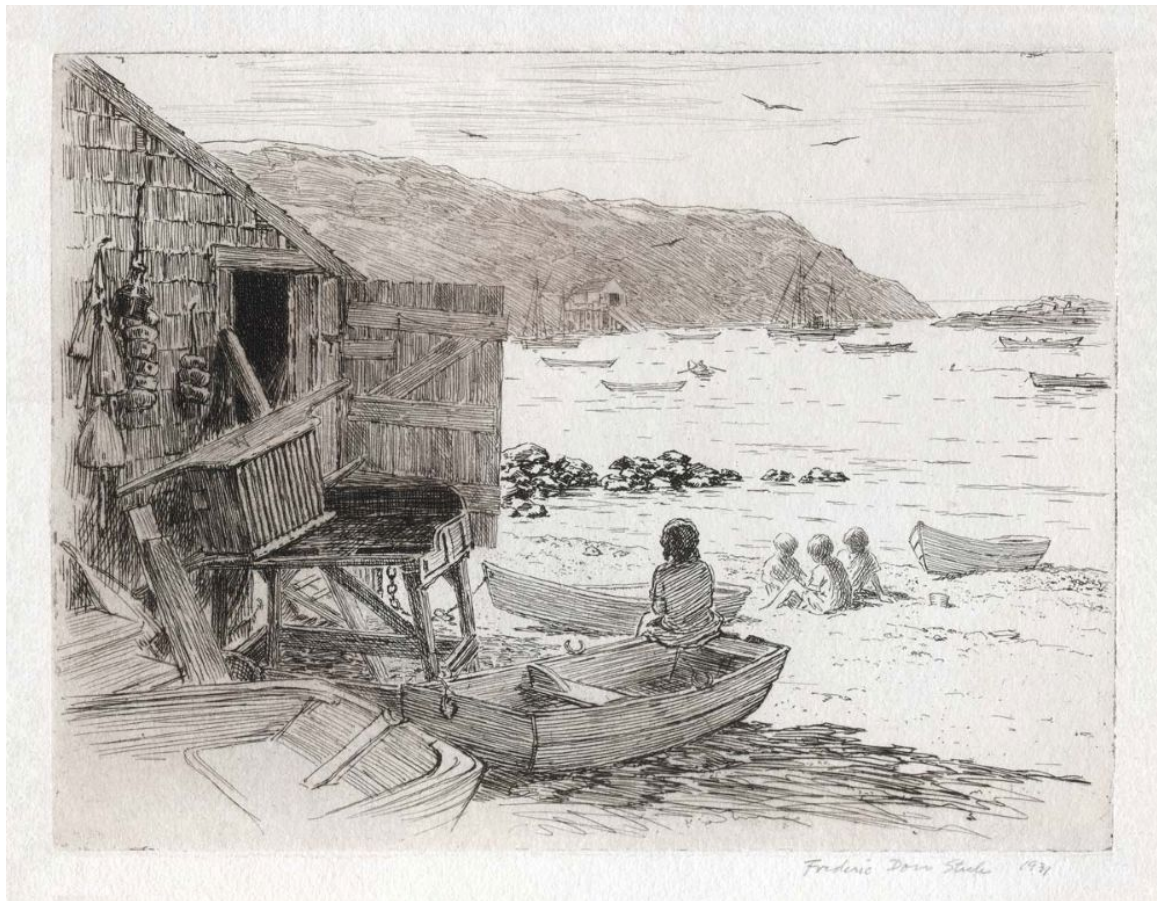
Monhegan, ca. 1913

Oil on canvas, 24 x 35 in.

Signed lower right: RvV Sewell



George William Sotter (1879–1953)
Sea Gull Cove, Monhegan Island, 1912
Oil on wood panel, 12 x 13 ¾ in.
Signed lower right: G. W. Sotter -1912-



Frederic Dorr Steele (1873–1944)

Fish Beach, Monhegan, 1931

Etching on paper, 5 $\frac{3}{4}$ x 7 $\frac{3}{4}$ in.

Signed lower right: Frederic Dorr Steele



Alice Kent Stoddard (1883–1976)
***Andrew Winter Painting Gull Rock*, ca. 1938**
Oil on canvas, 20 x 27 in.
Signed lower right: Alice Kent Stoddard



Alice Kent Stoddard (1883–1976)

***The Washerwoman*, n.d.**

Oil on canvas, 24 x 32 in.

Signed lower left: A. K. Stoddard



Don Stone (1929–2015)

***Sea Glass Pickers*, ca. 2000**

Oil on canvas, 7 ½ x 9 ½ in.

Signed lower left: Don Stone, N.A.



Mary Taylor (1895–1970)

Alice Painting Andy, ca. 1944

Oil on board, 20 x 24 in.

Signed lower right: Mary Taylor



Samuel Peter Rolt Triscott (1846–1925)

Silvery Day, Monhegan, ca. 1895

Oil on canvas, 15 $\frac{5}{8}$ x 21 $\frac{5}{8}$ in.

Signed on folded edge of canvas: S. P. Rolt Triscott



Samuel Peter Rolt Triscott (1846–1925)
Breaking Light, Monhegan Village, ca. 1920
Watercolor on paper, 14 x 19 in.
Signed lower left: S. P. Rolt Triscott



Andrew Winter (1892–1958)

Old Fish House, Monhegan, 1936

Watercolor on paper, 14 ½ x 21 ½ in.

Signed lower right: A Winter – 36



Andrew Winter (1892–1958)

The Boatyard, Monhegan, 1937

Watercolor on paper, 14 ¼ x 20 ¼ in.

Signed lower left: A Winter – 37



Andrew Winter (1892–1958)
***Hauling in the Traps*, ca. 1940**
Oil on canvas, 23 x 39 ½ in.
Unsigned



Andrew Winter (1892–1958)

Late Afternoon/Winter Light, Gull Rock, Monhegan, ca. 1940

Oil on canvas, 22 x 28 in.

Signed lower right: A Winter



Andrew Winter (1892–1958)

Wreck at Lobster Cove, Monhegan, Maine, 1948

Oil on canvas, 22 x 28 in.

Signed lower right: A Winter