

Edward L. Deci Collection part 1

These works are a recent bequest to the Monhegan Museum from long-time Director and President Ed Deci. They have not yet been formally accessioned into the Museum's collection, but, in anticipation that they will be, we want to give you the opportunity to include them in your selection of works for the 2028 Artists' Choice exhibit.



Woodhull Adams, 1854-1921
(Doubled sided) *Wharf and Surf*, ca. 1912
Oil on panel, 10 ½ x 13 ½ in.



Ernest Albert, 1857-1946
The Wave, ca. 1918
Oil on board, 8 x 10 in.



Theresa Bernstein, 1890-2002
Island Inn & Wharf
Oil on canvas panel, 12 x 16 in.



Evelyn Bicknell, 1857-1936
Village Street
Oil on panel, 8 x 11 in.



Frank Bicknell, 1866-1943
Boar's Head Rock, Monhegan
Oil on canvas, 30 1/8 x 26 1/8 in.



Frank Bicknell, 1866-1943
Old Fish-houses, Isle of Monhegan, ca. 1912
Oil on panel, 8 x 10 in.



Emil Bistran, 1895-1976

Across to Manana

Oil on canvasboard, 11 1/2 x 15 1/2 in.



A.J. Bogdanove, 1886-1946
Wincapaw Fishhouse
Oil on panel, 25 1/2 x 29 3/8 in.



Ruth Boynton, 1915-2003
The Woods, n.d.
Watercolor, 15 x 11 ½ in.



Robert Broderick, 1885-1945
Monhegan Harbor
Oil on canvas 9 1/2 x 15 1/2 in.



Milton Burns, 1853-1933

Old Monhegan Wharf

Gouache and pen on paper, 9 x 14 in.



William Burpee, 1846-1940
Black Head
Pastel on paper, 5 ½ x 7 ½ in.



Mary Butler, 1865-1946
The Old Wharf, Monhegan, ca. 1915
Oil on panel, 14 7/8 x 16 7/8 in.



Isabel Cartwright, 1885-1966
Ida Proper's Garden
Oil on canvas 20 x 24



William Chadwick, 1879-1962
After the Storm, ca. 1918
Oil on panel, 14 x 18 in.



Clarence K. Chatterton, 1880-1973
Monhegan No. 2, Headland Shadows, ca. 1918
Oil on panel, 12 x 16 in.



John Chetcuti, 1900-1975
Pier & Boat
Watercolor on paper, 11 x 15 in.



Constance Cochrane, 1888-1962
Monhegan Head
Oil on panel, 12 x 16 in.



Howard Hall Darnell, 1858 -1939
White Head from Gull Flats, ca. 1880
Watercolor and gouache on paper, 22 x 25 1/8 in.



Randall Davey, 1887-1964
Across Whitehead, 1911
Oil on panel, 11 x 15 in.

Edward L. Deci Collection part 2

These works are a recent bequest to the Monhegan Museum from long-time Director and President Ed Deci. They have not yet been formally accessioned into the Museum's collection, but, in anticipation that they will be, we want to give you the opportunity to include them in your selection of works for the 2028 Artists' Choice exhibit.



Jan Domela, 1894-1973
Crow's Nest & Kent Cottage, 1938
Oil on panel, 12 x 16 in.



Paul Dougherty, 1877-1947

Manana in Fog, 1920

Oil on canvas? canvas wrapped panel?, 16 x 22 in.



Helen Savier DuMond, 1872–1968
Monhegan Isle, Fisherman's Shack
Oil on canvasboard, 8 x 22 in.



Benjamin Eggleston, 1867-1937
Moon, Rocks, & Sea
Oil on canvas, 10 x 8 in.



George Clowes Everett, 1865-1926

Monhegan Village

Oil on canvas, 14 x 22 in.



George Clowes Everett, 1865-1926

Nigh Duck Rock

Oil on panel, 5 ½ x 7 ½ in.



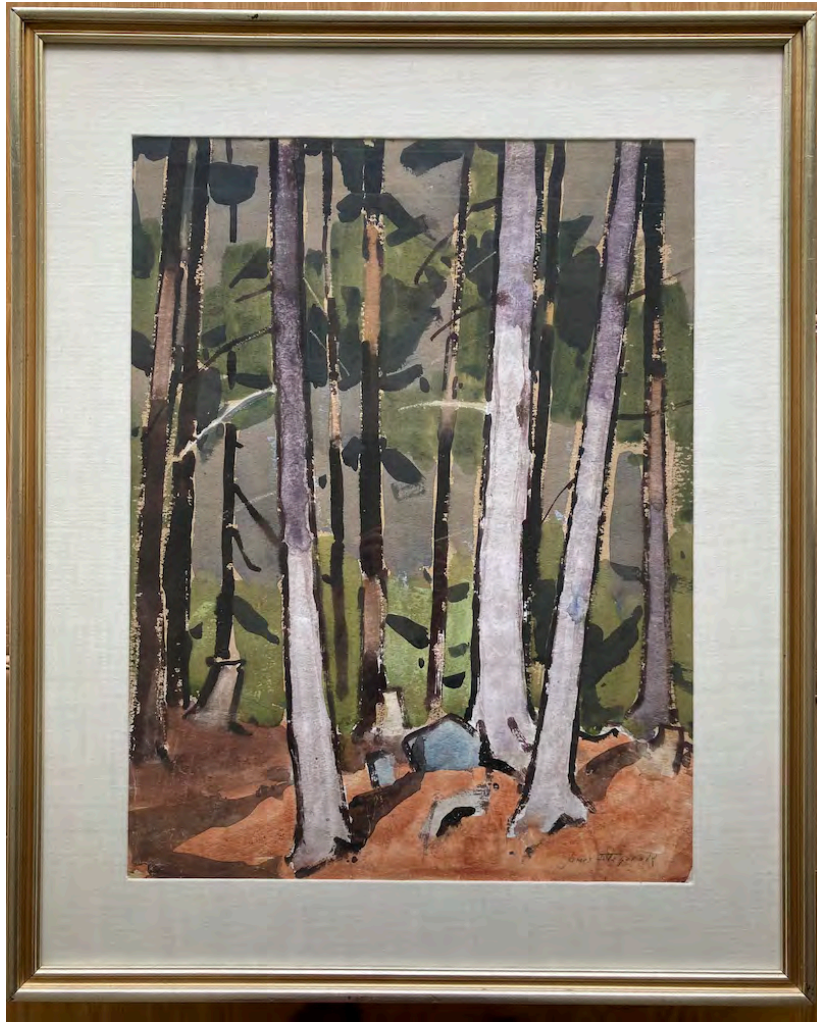
Walter Farndon, 1876-1964
Village Scene, Monhegan
Oil on board, 24 x 28 in.



Ernest Fiene, 1894-1965
Norton's Ledge, Monhegan, 1953
Oil on canvas, 20 3/4 x 24 7/8 in.



James Fitzgerald, 1899-1971
Moonlit Ocean, ca. 1965
Oil on Masonite, 15 x 20 in.



James Fitzgerald, 1899-1971

Cathedral Woods, ca. 1960

Transparent and opaque watercolor with Chinese ink on paper, 26 x 20 in.

Edward L. Deci Collection part 3



James Fitzgerald, 1899-1971
The Crow's Nest, Monhegan, ca. 1960
Oil on canvas, 29 x 39 in.



Alfred Fuller, 1899-1980
Autumn toward Manana
Oil on canvas, 16 x 20 in.



Elizabeth Fuller, 1896-1979
Harrison Humphrey's Blacksmith Shop, ca. 1918
Oil on cardboard, 9 x 9 in.



Henry Gasser, 1909-1981
A Walk Up from the Harbor



George Howell Gay, 1858 - 1931
Misty Day Monhegan
Watercolor on paper, 10 x 20 in.



Emil Gruppe, 1896-1978
Monhegan Harbor
Watercolor on paper, 14 x 22 in.



Bernhard Gutmann, 1869 - 1936
Monhegan Village, 1921
Oil on panel, 8 x 10 in.



John Haapanen, 1891-1965
Headland in Fog
Oil on canvas, 19 ³/₄ x 15 ¹/₄ in.



William Hekking, 1885-1970
After the Wreck
Watercolor on paper, 19 x 23 ½ in.



Don Holden, 1931 - 2017
Monhegan Shore V, 1991
Watercolor on paper, 7.5 x 11 in.

Edward L. Deci Collection part 4

These works are a recent bequest to the Monhegan Museum from long-time Director and President Ed Deci. They have not yet been formally accessioned into the Museum's collection, but, in anticipation that they will be, we want to give you the opportunity to include them in your selection of works for the 2028 Artists' Choice exhibit.



Eric Hudson, 1862-1932
Fishermen & Boats, ca. 1915
Oil on board, 8 x 11 in.



Elena Jahn, 1938-2014
Eclipse of the Sun
Oil on panel, 10 1/2 x 11in.



Henry Rodman Kenyon, 1861-1926
Studley Fish House, aka Over Bud, ca. 1910
Oil on board, 7 ½ x 11 in.



Maud B. Knowlton, 1870-1956
Monhegan Shore Flowers, 1912
Watercolor on paper, 16 1/4 x 12 1/8 in.



Maud B. Knowlton, 1870-1956
Foggy Day, Monhegan, 1925
Oil on canvas, 9 7/8 x 14 in.



Maud B. Knowlton, 1870-1956
Spruce Tree, Monhegan, 1902
Watercolor on paper, 15 x 10 $\frac{3}{4}$ in.



Frances Kornbluth, 1920-2014
Dusk, 1999
Oil on linen, 13 ½ x 14 in.



Hayley Lever, 1876-1958
The Long Run
Oil on board, 6 ½ x 7 ½ in.



Jean Liberte, 1896-1965

Cliffs & Trees

Watercolor on paper, 15 ½ x 19 ½ in.



Charles E. Martin, 1910-1995

Fish Beach, 1967

Watercolor and gouache on paper, 22 x 16 in.



Florence Taylor Martin, 1910-2009
Hiram's Barn at Night
Watercolor on paper, 9 1/2 x 13 1/2 in.



Antonio Martino, 1902-1989
Wreck of St. Christopher
Oil on panel, 9 x 12 in.



Henrik Martin Mayer, 1908-1972
Northern Lights
Oil on Masonite, 11 $\frac{3}{4}$ x 9 $\frac{1}{2}$ in.



Jan McCartin, 1909-2002
Two Tomatoes
Oil on canvas, 10 ½ x 13 ½ in.



Jan McCartin, 1909-2002
Island Inn and Sky, 1990
Oil on canvas, 13 x 10 in.



Leo Meissner, 1895-1977
Monhegan White Water
Oil on canvasboard, 12 x 16 in.



Zero Mostel, 1915-1977
The Depths of Fish Beach
Oil on canvas, 10 x 23 in.



Zero Mostel, 1915-1977
The Merchant, 1977
Pencil on paper, 13 1/2 x 11 1/2 in.



Zero Mostel, 1915-1977
Self Portrait, 1977
Pencil on paper, 13 ½ x 11 ½ in.



Clifford Odets, 1906-1963

The Large Dory

Watercolor and pastel on paper, 9 1/4 x 12 1/4 in.

Edward L. Deci Collection part 5

These works are a recent bequest to the Monhegan Museum from long-time Director and President Ed Deci. They have not yet been formally accessioned into the Museum's collection, but, in anticipation that they will be, we want to give you the opportunity to include them in your selection of works for the 2028 Artists' Choice exhibit.



Margaret Jordan Patterson, 1867–1950

Twin Spruces & the Yew

Watercolor on paper, 16 5/8 x 19 1/2 in.



Margaret Jordan Patterson, 1867–1950
Old Fishhouse, Monhegan, Maine, ca. 1918
Color woodblock print on paper, 7 ½ x 10 ½ in.



Bert Poole, 1853-1939
The Hermitage, ca. 1910
Oil on canvas, 14 x 20 in.



Frederick W. Ramsdell, 1865-1915
Monhegan Harbor, ca. 1912
Oil on panel, 11 1/8 x 13 5/8 in.



William Trost Richards, 1833-1905
White Head Monhegan
Oil on paper on board, 9 x 16 in.



William S. Robinson, 1861-1945
Monhegan Island, Maine, 1932
Oil on panel, 16 1/2 x 18 1/2 in.



Edward F. Rook, 1870-1960

Black Head & Squeaker Cove, aka Monhegan

Oil on canvas, 30 x 36 in.



Karl Schmidt, 1890-1962
Mary Kelsey House
Watercolor on paper, 9 x 11 in.



Henry Bill Selden, 1886-1934
Fisherman's Cottage
Oil on board, 12 x 16 in.



Aaron Draper Shattuck, 1832-1928

Cliff Study- Granite Rocks of Maine, aka Monhegan, 1858



Rudolf Sheffler, 1884-1973
Rocks & Surf, Monhegan
Oil on paper, 18 1/2 x 13 1/2 in.



Arline Simon, 1927-2020
A Summerplace; from the Sunday NY Times
Pastel on paper, 11 1/2 x 15 in.



Maurice Sterne, 1878-1957

The Head of Many Faces, 1916

Watercolor on paper (poss ink wash?), 24 5/8 x 30 5/8 in.



Seth W. Steward, 1844-1934
White Head Monhegan, 1910
Oil on canvas, 21 ¼ x 36 ¼ in.



Reuben Tam, 1916-1991
Surf, Deep Evening
Acrylic on paper, 8 x 6 ½ in.



S.P. Rolt Triscott, 1846-1925
Surf, Lobster Cove
Oil on canvas, 11 ½ x 9 ½ in.



James Gale Tyler, 1855–1931
Schooner off Monhegan, 1913
Oil on canvas, 14 x 19 in.



Otis Weber, 1832-1888
Monhegan
Watercolor on paper, 12 x 21 in.



Stow Wengenroth, 1906-1978
The Monhegan Light Station, 1941
Dry brush on paper, 10 5/8 x 13 3/4 in.



James Perry Wilson, 1889-1976

On the Cliff, 1926

Oil on panel, 8 x 10 in.



Charles Woodbury, 1864-1940
Headland, Monhegan
Oil on panel, 15 x 19 in.